

|                      |      |      |
|----------------------|------|------|
| CI/SfB               | (29) | (k2) |
| CAW P10              |      |      |
| Uniclass JP10:L68114 |      |      |

## Product Information

### Description

FS712 Intucoat is a water-based acrylic coating and adhesive, which may be used in conjunction with FB750 Intubatt, FB770 Intudeck and FJ220 Intubatt 3 as a bonding agent and a surface repair coating.

### Usage / Purpose

FS712 is suitable for:

- Repairs to damage to the surface of the coating on FB750 / FB770 / FJ220
- Bonding of FB750 / FB770 / FJ220 joints, both to substrate and cut pieces
- For coating the raw edge of FB750 & FB770, when using the surface mounted application method
- Cold smoke & air pressure seal
- Fibre encapsulant

### Colours

White

### Packaging

5 litre (~7.5 kg) can

### Availability

Direct from Tremco CPG UK Limited (see details on this TDS).

## Usage Guidelines

Always read SDS, pre-application guidance and relevant application detail prior to application. Ensure the latest documents are downloaded prior to every project commencement.

### Protective Equipment

Use in well ventilated conditions and ensure all recommended protective equipment is worn during handling & use of this product. For full recommendation, refer to safety data sheet.

### Necessary Tools

- Paint brush
- Suitable spraying equipment (consult Tremco CPG UK Technical Services)

### Preparation

- All surfaces must be clean and sound, free from dirt, grease and other contamination.
- For fibrous substrates (e.g. mineral fibre batt), a light water mist will assist ease of application.
- If a clean line is required on adjoining substrates, masking tape should be used.

### Application

#### Batt to Batt

Coat FS712 to the entire abutting edges using a suitable paint brush on both faces to the full width and compress together.

#### Batt to Alternative Substrate

Coat FS712 to the entire proposed area of abutment and batt edges using a suitable paint brush on both faces to the full width and compress together.

#### Batt Surface Repair

Coat FS712 over any damaged area of the existing batt coating.

#### Exposed Batt Edge

Coat FS712 over the exposed edges of pattern installed FB750 Intubatt to the finished appearance required (a single brush coat is acceptable).

### Important Information

- A foil barrier is required around sensitive pipework (such as C-PVC).
- If used around Pegler X-Press Carbon Steel pipes, the pipe manufacturer should be consulted, and their recommendations followed.
- If straight edge is required, a suitable decorating tape should be used.
- Prior to coating any substrate not listed within this TDS, we recommend a patch test on a trial area be carried out prior to full application. If any adverse effects are noted, contact Tremco CPG UK Technical Services.

# Nullifire

Smart Protection

# FS712

## Intucoat Brush



### Key Benefits Summary

- Up to 4 hours fire resistance - Tested to EN 1366-4, EN 1366-3 and BS 476 Pt 20-22 in conjunction with FB750 Intubatt, FB770 Intudeck or FJ220 Intubatt 3
- Used for sealing FB750 Intubatt/ FB770 Intudeck/ FJ220 Intubatt 3 on flexible walls, rigid walls & floors (usage dependent on product selected)
- Acoustics up to 59 dB
- Air seal up to 2,000 Pa
- Provides a tested smoke seal
- Optifire™ unique traceability identifier

This product is certified to applicable European (EN) standards and UL-EU Mark service requirements.  
CERT. N° UL-EU-01058-CPR



ETA 17/0392

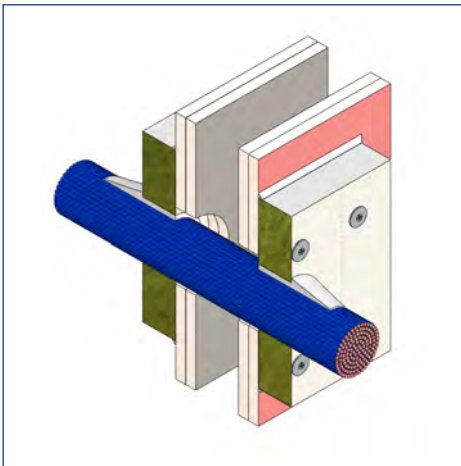


APPROVAL N° CF5343

### Technical information

| Property                               | Test Method   | Result                      |
|--|---|-----------------------------|
| Composition                            |   | Water-based acrylic sealant |
| Acoustic Rating                        | BS EN ISO 10140:2-2010  | up to 59 dB                 |
| Air Permeability                       | BS EN ISO 1023:2  | Air tight up to 2,000 Pa    |
| Solids Content                         |   | 60% to 66%                  |
| pH Value                               |   | 6.3 to 8.3                  |
| Specific Gravity                       |   | 1.46 to 1.52                |
| Viscosity                              |   | Thixotropic                 |
| Shore A Hardness                       |   | ~ 65                        |
| Maximum Continuous Service Temperature |   | 70°C                        |
| Storage                                | Store in dry conditions between +5°C and +40°C. Product may be left for short periods (not exceeding 72 hours) at temperatures as low as -5°C. Allow product to defrost for 24 hours at +10°C before use. |                             |
| Shelf Life                             | 36 months when stored as recommended in original unopened containers.   |                             |

### Typical Details



FS712 Intucoat Brush applied to raw edge of pattern fit/surface mounted FB750 Intubatt

### Cleaning

Immediately remove all excess sealant and masking tape before cure. Clean tools in warm water. Cured sealant can only be removed mechanically.

### Health & Safety Precautions

Safety data sheet must be read and understood before use.

### Technical Service

Tremco CPG UK Limited has a team of experienced Technical Sales Representatives who provide assistance in the selection and specification of products. For more detailed information, service and advice, please call Customer Services on 01322 551010.

### Guarantee / Warranty

Tremco CPG UK Limited products are manufactured to rigid standards of quality. Any product which has been applied (a) in accordance with Tremco CPG UK Limited written instructions and (b) in any application recommended by Tremco CPG UK Limited, but which is proved to be defective, will be replaced free of charge.

No liability can be accepted for the information provided in this leaflet although it is published in good faith and believed to be correct.

Tremco CPG UK Limited reserves the right to alter product specifications without prior notice, in line with Company policy of continuous development and improvement.